

SCHOOL SAFETY UPDATE

FRANKLIN SCHOOL COMMITTEE
October 12, 2021



OUR THEORY OF ACTION:

If we nurture a **safe**, supportive, inclusive, and collaborative learning environment...

...where all stakeholders are engaged and take ownership of their role in teaching and learning and there is a broad, rigorous curriculum, exemplary instructional practices, and culture of feedback and reflection regarding student performance...

...then all Franklin students will develop the necessary social emotional, academic and career skills to be productive global citizens in an ever-changing world.



Maslow's Hierarchy of School Needs



Synergy Collaboration

► Assessment

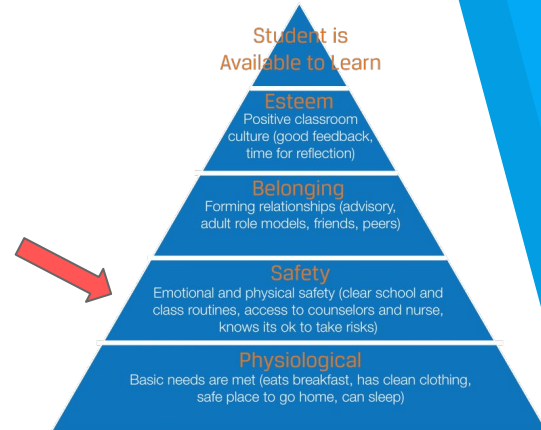
- Assessed district's core components of existing policies/practices, facilities/school building systems and continued staff training.

► Planning

- Developed district-wide school safety plan
- Ensured practices are responsive to the needs of all schools within the district
- Updated emergency response protocols.

► Training

- Conducted district-wide school safety training that occurred on November 6, 2018.



FOCUS AREAS

Goal: Prevent and minimize the effects of violent incidents and emergencies by implementing a comprehensive school safety plan that reflects the recommended Synergy practices and protocols.

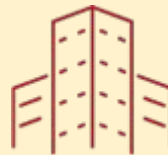
FOCUS AREA 1: PRACTICES & PROTOCOLS



FOCUS AREA 2: STAFF TRAINING



GOAL 3: FACILITIES



FOCUS AREA 1: PRACTICES & PROTOCOLS

Work Completed

- ☐ Developed and implemented *FPS Threat Assessment Protocol*
- ☐ Finalize and distribute printed resources for all staff (confidential)
- ☐ Revised Lockdown protocols
- ☐ Updated school safety terms, practices, common language (lockdown, administrative lockdown, classroom containment, etc.)
- ☐ Developed supporting resources and FAQ page, etc.
- ☐ Created a School Safety Training for the staff makeup sessions
- ☐ Administrator/SROs attend a workshop on how to assess and triage school threats and create an effective response and threat mitigation plan (best practices based on guidelines from the Secret Service and FBI)

Next Steps

- ☐ Publish internal *FPS School Safety Dashboard* to serve as a digital resource for all staff (confidential)

FOCUS AREA 2: STAFF TRAINING

Work Completed

- ☐ Conducted Nov. 6th Synergy Safety Training
- ☐ Annually Review safety practices during staff meetings
- ☐ Facilitated school-based safety debriefs during staff meetings
- ☐ Developed New Teacher training - Fall during their first year

Next Steps

- ☐ Develop an annual presentation series and training schedule of the following:
 - ☐ Student presentation (secondary level)
 - ☐ Expand staff training - During the meeting, PD, etc.
 - ☐ Develop a series of building-based mini-trainings focused on practicing the 4 Ls
 - ☐ Train our subs and other staff

Ongoing

- ☐ Provide training session for new staff
- ☐ Solicit end-of-year staff feedback
- ☐ Community Outreach (all levels)

FOCUS AREA 3: FACILITIES

Work Completed

- ☐ Received state funding through safe schools security grant
- ☐ Conducted building-specific safety assessments with SRO and Facilities (main entrance, classroom door security, phone capabilities)
- ☐ Reviewed school/complex *Staging Areas and Rally Points* in accordance with Franklin Police recommendations

Ongoing

- ☐ Continue building security upgrades across the district (cameras, main entrances, panic buttons, etc.)
- ☐ Continue to provide safety resources to all staff
- ☐ Leverage School Safety Grants and Capital Improvement funds for school security
- ☐ Share building use protocols for school safety



SAFETY PLANNING PROCESS

4: DEBRIEF INCIDENTS & SOLICIT FEEDBACK:

- Public Safety
- Faculty & Staff
- Student
- Parents/Guardians
- Franklin Freedom Team

1: DEVELOP AND/OR REVISE PLANS

Collaborate with Public Safety to continually revise plans based on feedback and information

**Ongoing
Cycle**

3: PROVIDE TRAINING

- Drills: Evacuation and Lockdowns
- Administrative Tabletop Activities

2: COMMUNICATE PLANS

- SC/Community Presentations
- Faculty Meetings
- Student Assemblies
- Written Communications



SAFETY DRILLS

Emergency drills are a routine part of school management & operations

Examples:

- ▶ **Evacuation**
- ▶ **Fire Drills**
- ▶ **Lockdown/Administrative Lockdown**
- ▶ **Bus Drills**



COMMUNICATION

- ▶ Regroup Notification
- ▶ Advanced Planning and Debrief All Incidents with Public Safety Officials/Town Officials
 - ▷ Discuss Recommendations and Implement
- ▶ Communicate Appropriate Details with All Stakeholders
- ▶ Utilize Feedback from Stakeholders to Improve Future Response & Communication
- ▶ *FPS School Safety Dashboard*

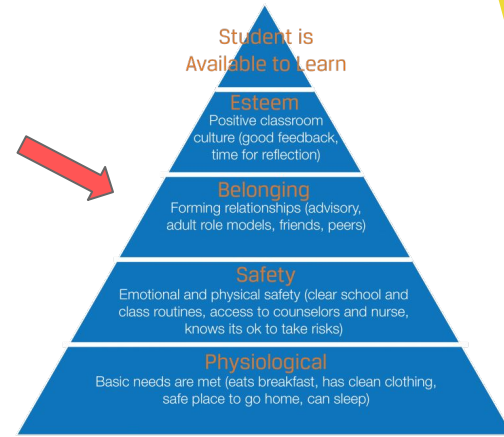
SAFETY TERMS

Lockdown	For use in <u>response to school emergency</u> (e.g. intruder, active shooter); <u>lockdown procedures</u> (4Ls Protocol) in effect in classrooms, hallways, and school spaces; no traffic permitted into or out of the school.
Classroom Containment	For use by school personnel when seeking to <u>shield students from something in hallways</u> ; may be health related, a volatile community member, an animal in the building; traffic in and out of the school office may be permitted or restricted, depending on context by principal decision.
Administrative Lockdown	No traffic permitted into or out of the school. For use in response to an emergency <u>within the community but not within school building</u> ; <u>"Business as usual"</u> within classrooms, hallways, and other interior school spaces.
Shelter in Place (Fires only)	For use with/by Franklin Fire Department; pertains to the procedure for students who need assistance during fire/fire drill evacuation.



Belonging - School Climate & Culture

- ▶ Diversity, Equity, and Inclusion
 - ▷ Speak Up At School Staff Training
- ▶ Relationships between students & adults - Focus on sense of belonging
 - ▷ Advisory, Morning Meetings, Classroom cultures, clubs, activities
- ▶ Behavioral Norms
 - ▷ Restorative Justices
 - ▷ Tiered Systems of Support
 - ▷ Revised Code of Conduct - Supportive Accountability
- ▶



Most Important: **See Something, Say Something**





SAFETY - SEL & Mental Health Support

- Broad range of School-based Supports
 - SEL Tiered-intervention strategies
 - Counseling Services
- Effective Community Partnerships
 - WJC Interface Referral Service:
 - Project Counseling & Family Supports: Y.O.U., Inc.
 - FPS School Wellness Advisory Committee
 - FPS Substance Abuse Task Force
 - Police, Department of Children and Families, Courts

QUESTIONS?