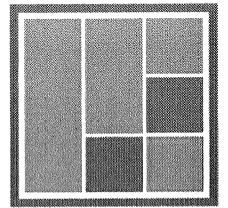


Envisioning an Equitable Future Through Personalized Learning



Thursday, May 3, 2018; 8:30AM to 3:15PM
Holiday Inn Boston-Dedham Hotel & Conference Center

Agenda

8:00 AM	Registration Begins	Dedham Foyer
8:30 AM	Light Breakfast Available	Dedham Room
9:00 AM	Welcome & Introductions	Dedham Room
9:15 AM	Keynote Address by Clint Smith	Dedham Room
10:15 AM	Break	
10:30 AM	Breakout Sessions Round I	See session descriptions
11:30 AM	Lunch Buffet	Dedham Room
11:50 AM	Student Panel Isabel Falk, Class of 2020, Leominster Center for Excellence Jonathan Rosario, Class of 2018, Margarita Muñiz Academy Josiah Wade, Class of 2018, Margarita Muñiz Academy	Dedham Room
12:30 PM	Networking Time	
12:45 PM	Breakout Sessions Round II	See session descriptions
1:45 PM	Break	
2:00 PM	"Design Thinking for Equity" Studio Experience	Dedham Room
3:00 PM	Evaluation & Debrief	Dedham Room
3:15 PM	Conference Adjourns	

Follow us online!
@CCEBoston

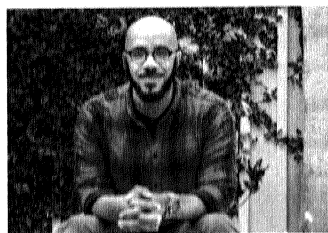


Join the conversation!
#EquityEPL18



Center for Collaborative Education
Transforming schools for student success

Keynote Speaker



Clint Smith is a prolific writer, teacher, and doctoral candidate in education at Harvard University researching mass incarceration, the sociology of racism, and the history of U.S. inequality. You may recognize Clint from his two TED Talks, "The Danger of Silence" and "How to Raise a Black Son in America." Clint is a 2014 National Poetry Slam champion, author of the poetry collection *Counting Descent*, and has been published in *The New Yorker*, *The Guardian*, and the *Harvard Educational Review*, to name a few.

Breakout Sessions Round I

Cultural Relevance in the Classroom **C**

Presenter: Melinda Lopez (Highlander Institute, RI)

Location: **Patio Room**

The awareness of cultural dimensions as a frame for our own thinking as well as how we construct lessons, give feedback and support students in our classrooms and schools will be the focus of this campfire discussion.

The Pursuit of High School Science beyond the School Walls **A**

Presenters: Carrie Duff & Isabel Falk (Leominster Center for Excellence, MA)

Location: **Midland Room**

In this session educators will meet a student who has taken her passion for science to a new place, literally. Isabel Falk has had an internship at an environmental water testing lab for the past year. She will share an overview of her work and together, participants will consider how her experience coincides with high school science standards, and then how participants might create opportunities for learning beyond the school walls in their own situations.

The Role of Exposure & Capacity Building in Transforming to a Learner-Centered School **B**

Presenters: Nora Vernazza & Jennifer Nicol (TechBoston Academy, MA)

Location: **Terrace Room**

TechBoston Academy (TBA) is an open-enrollment pilot school in Dorchester with 1,000 students. Currently, TBA has many shining innovative bright spots amid traditional structures. In this session, TBA school leaders will walk participants through their strategic path to increase all staff understanding of learner-centered practices as well as build the capacity of the staff most ready to create change. TBA is evolving teaching and learning through an advisory program, open-walled learning, personalized-learning, and a MIT STEAM Studio.

Silence is the Residue of Fear **D**

Presenter: Clint Smith

Location: **Dedham Room**

In this session, participants will engage in a writing and reflection workshop that pushes them to wrestle with complicity in the face of injustice. Participants will be asked to consider the ways in which, whether consciously or unconsciously, they may contribute to systems of inequality and will work alongside one another to develop personal and collective solutions moving forward.

"Real Talk" with Holmes Innovation School **I**

Featuring: Yeshi Gaskin, Olivia Pizzi, & Catherine Davis

Location: **Dedham Foyer**; Limited space available

The Holmes Innovation School is located in the heart of Dorchester, MA and serves 385 students. It is a full inclusion elementary school with a mission grounded in social justice, access, strong relationships, and equity. During this Fireside Chat, Principal Yeshi Gaskin and teachers Olivia Pizzi and Catherine Davis are excited to engage in conversations with participants to answer any questions regarding school-wide transformation and faculty buy-in for personalized learning.

Breakout Sessions Round II

Embracing Our Mess **B**

Presenters: Yeshi Gaskin, Olivia Pizzi, & Catherine Davis (Holmes Innovation School in Boston, MA)

Location: **Terrace Room**

The session will highlight the process of members of the Panther Team. The Panther Team is a group of 6 teacher leaders who have volunteered to take on Holmes' 3 innovative principles this year: blended learning, flexible learning spaces, and social emotional learning. The team has engaged in the design process to discover the best models for each of these principles. The goal of the Panther Team is to scale up Holmes' practices and engage in a messy process of learning, failing, and learning from failures.

Family Engagement for Personalized Learning **D**

Presenters: Laura Tota & Irene Logan (Center for Collaborative Education, MA)

Location: **Dedham Room**

If you have a school- or district-level position and are wondering "*what is the connection between family engagement and highly effective personalized learning?*" then this session is for you! In this session, participants will have the opportunity to learn from one another and explore numerous resources to consider next steps for advancing family engagement in their school/district.

The Rigor Machine: Infusing Rigor in a Mastery Model **C**

Presenters: Mike Miele & Nicole Lanni (Highlander Institute, RI)

Location: **Patio Room**

Teachers will interact with the 'Rigor Machine' as they plan instruction for their students to ensure that they are infusing an appropriate level of rigor in their stations. Participants will explore examples of rigorous tasks, both teacher and student designed; define rigor and the importance of rigorous tasks in a blended model; analyze lesson plan using the 'Rigor Machine' to determine the level of rigor in each station; and implement lesson plan using the Lesson Planning Template, assessing the rigorousness of tasks using the 'Rigor Machine.'

Understanding Our Students: How Choice Theory and a Strength-based Approach Can Help Us Better Support and Empower All of Our Young Leaders **A**

Presenters: Gemma Falivene & Tim Wylie (Thompson Island Outward Bound Education Center, MA)

Location: **Midland Room**

Effectively redirecting individual student behaviors can be hard, but within Choice Theory, educators can find relief and direction. Paired with the development our practice to embrace a strength-based approach, it's even easier to find the inspiring qualities in our young leaders and help them thrive in group settings. Through interactive demonstrations of the theory, a series of discussions about its application, and friendly competition to help us practice finding the strengths in adverse behaviors, we can choose together to cultivate and empower the best parts of our students.

"Real Talk" with Leominster Center for Excellence **E**

Featuring: Carrie Duff and Isabel Falk

Location: **Dedham Foyer**; Limited space available

Leominster Center for Excellence (LCE) is a small innovation high school in the Leominster Public Schools, and a Big Picture Learning School. Coordinated with teacher-advisors and family members, each student designs an Individual Learning Plan focused on their interests and passions which guide the academic expectations and personal growth goals for each student and serve to measure student progress. Students at LCE work with a mentor in the community through an internship of their choosing where relevant, authentic projects and learning give them a sense of how their interests play out in the real world and help them prepare for college and career. During this Fireside Chat, Principal Carrie Duff and student Isabel Falk are excited to share with participants the unique experience of students at Leominster Center for Excellence and discuss the school practices, policies, and structures that support LCE's innovation.

LEARN WITH CCE THIS SUMMER!



BUILD A FOUNDATION FOR STUDENT-CENTERED LEARNING AND ASSESSMENT

Take the lead in your professional learning this summer with CCE's **Essential Personalized Learning** and **Quality Performance Assessment** Institutes. Each of these four-day events will inspire new ideas of what student-centered teaching and learning can look like.

QUALITY PERFORMANCE ASSESSMENT SUMMER INSTITUTE

JULY 16-19, 2018, BOSTON, MA

www.cce.org/summerinstitute

ESSENTIAL PERSONALIZED LEARNING INSTITUTE

JULY 30-AUG 2, 2018, DEDHAM, MA

www.cce.org/plinstitute

- ▷ Grasp the basics of student-centered learning and assessment design
- ▷ Design your own personalized learning plans and performance assessments
- ▷ Gain the skills you need to bring this work back to your classroom

Experts and leaders in the work will be on hand to offer feedback and guidance on how you can effect lasting change in your school. Both institutes are appropriate for **teachers, coaches, teacher leaders, and administrators.**

EMPOWER STUDENTS TO PURSUE THEIR INTERESTS AND STRENGTHS WHILE EMBRACING THEIR CULTURES AND IDENTITIES



Center for Collaborative Education

transforming schools for student success