

The background of the entire image is a wide-angle photograph of the Grand Canyon at sunset. The sky is a vibrant mix of orange, yellow, and blue, with large, dramatic clouds. The canyon's layered rock formations are illuminated by the warm light of the setting sun, creating a rich palette of reds, oranges, and browns. The perspective is from a high vantage point, looking down into the vast, winding chasms of the canyon.

Franklin Public Schools

Southwest National Parks Adventure 2024

Trip Purpose

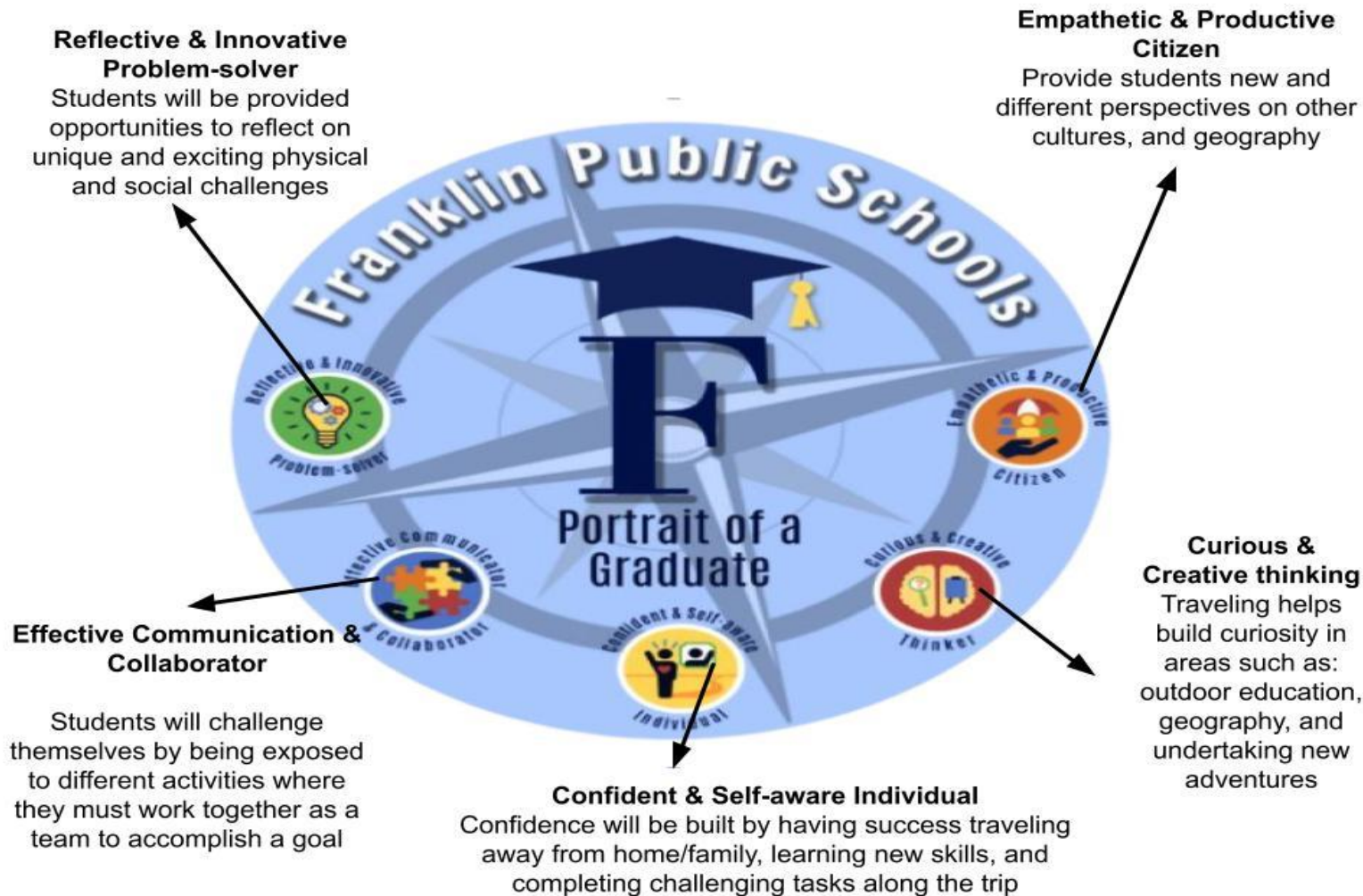
- ★ One of a kind enrichment opportunity for 8th grade students
- ★ Allow students to experience many different unforgettable areas of the country.
- ★ Expose students to United States National Parks through outdoor education activities.
- ★ Create real life connections to the Physical Education, Science, and History/Civics curriculum, as well as all 5 SEL competencies.



Benefits of Student Travel - The Grand Classroom Model



- ★ Builds confidence through travel
- ★ Encourages student leadership
- ★ Develops friendships
- ★ Provides real-life and authentic education outside the classroom
- ★ Teaches team building and personal development
- ★ Empowers and requires independence
- ★ Provides challenges through adventure
- ★ Bestows stewardship towards the environment





Trip Highlights

Franklin Middle Schools Southwest Adventure

Sample Itinerary

Day 1

- Arrive in Phoenix
- Lunch
- Slide Rock State Park
- Visit Sedona
- Dinner
- Rock climbing at indoor facility
- Check into hotel

Day 2

- Hotel breakfast
- Depart for Grand Canyon National Park
- Mather Point
- Lunch
- Hike below the rim of the Grand Canyon on the South Kaibab Trail
- Desert View Watchtower
- Cameron Trading Post
- Dinner
- Return to hotel

Day 3

- Hotel breakfast
- Explore Peekaboo Canyon - slot canyon
- View the iconic Horseshoe Bend
- Lunch
- Float trip down the Colorado River to Lee's Ferry
- Dinner
- Return to hotel

Day 4

- Hotel breakfast
- Visit the Coral Pink Sand Dunes
- Depart for Bryce National Park
- Lunch
- Hike the Queens Garden and Navajo Loop
- Dinner
- Return to hotel

Day 5

- Hotel breakfast
- Depart for Zion National Park
- Hike to Emerald Pools
- Lunch
- Hike the Narrows (weather permitting)
- Dinner in Las Vegas
- Fountains of Bellagio
- Depart on overnight flight home



Proposed Dates

Mon, April 15

Through

Fri, April 19

Hiking the South Kaibab Trail Grand Canyon





**Viewing Horseshoe
Bend**

Hiking at Bryce Canyon



Hiking to the Emerald Pools at Zion National Park



JOE BRAUN
PHOTOGRAPHY

Who is...



grand
classroom



- ★ **Began with trips to National Parks in 2002.**
- ★ **Student travel company that specializes in taking young people on custom-crafted, experiential education trips around the world.**
- ★ **Trips include Washington, D.C., New York, Grand Canyon, Yellowstone, Puerto Rico,, Galapagos, Belize, Iceland, Costa Rica, and many more!**
- ★ **Other Massachusetts communities using Grand Classroom include , Belmont, Boston, Cohasset, Foxborough, Marshfield, Hingham, Newton, Norwell, Natick, Wellesley, and many other communities in MA and nationwide**

Student Safety



- ★ 24 Hour Grand Classroom local guides with WFR certification on high adventure activity trips
- ★ Domestic and International in-country on-call support
- ★ Certified activity professionals with vetted partner vendors
- ★ 24 hour LIVE emergency contact number for teachers, students, and parents while on tour
- ★ Medical and dental insurance coverage while on tour
- ★ 24 hour emergency telehealth consulting access on tour
- ★ Liability insurance for emergency coverage included
- ★ Scaled itineraries to meet age group, fitness, outdoor experience, and group stamina needs

Equity and Accessibility



- ★ Open to 8th Grade Students at all 3 Franklin Middle School
- ★ Students must be in good academic and behavioral standing. Exemplifies and demonstrates the middle school core values
- ★ Individualized payment plans, personal fundraising pages with donation links
- ★ Community Scholarship available to be used per teacher leader guidance



Grand Classroom is a full-service educational travel provider offering teacher-led student trips to national parks, historic U.S. cities, and international destinations.

Inclusions:

- All transportation
- 24/7 Specialty Grand Classroom Guide
- All meals including lunches
- All lodging - 4 students per room
- Full accounting services with custom payment schedule
- All activity fees
- 24/7 Emergency support
- Expert tour planning
- Promotional materials
- Medical, dental, and liability insurance
- Customized private tour group
- Personalized web page
- Local, on-call. Grand Classroom consultant to support all meetings leading up to the trip
- \$50 per participant for use towards "Community Scholarship"
- TRP+ level travel refund protection for all travelers

School: Franklin Public Schools (MS)

Destination: Southwest National Parks

Travel Dates: April 15th - 19th/20th, 2024

All-Inclusive Pricing:

Based on 20 students - \$3,538

Based on 35 students - \$3,319

Based on 50 students - \$3,230

Chaperone Ratio: 1:7

Lead Teachers:

Nick Goldman and Greg Rakovic

Note - Sample itinerary below is fully customizable and can be tailored to meet travel goals and curriculum connections in partnership with your on-call, Grand Classroom outdoor experiential education consultant

Trip Pricing and Package Inclusions



\$99 non-refundable deposit (included in pricing) to reserve a seat and individualize/custom budget plans available

**\$50 per participant included for use as "Community Scholarship"
as applied to student accounts per teacher guidance**

Travel Refund Program protection plans are available at registration:

TRP+ = \$350 - trip refund protection up to 24 hr before travel without exclusions

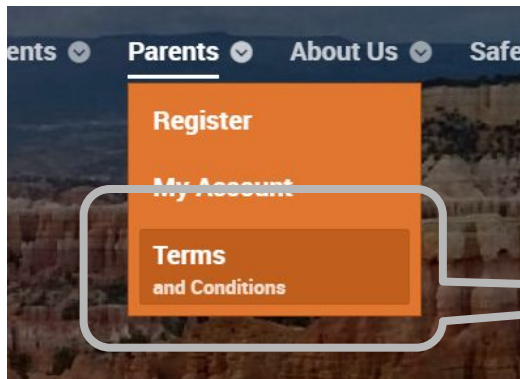
How to Register

Help Us Find Your Trip

School Name * :

State * :

Submit



Visit www.grandclassroom.com and search for your trip by entering “Franklin Public Schools” and MA.

Trip Cost: \$3,319 per student

\$99 non-refundable deposit due at registration

Optional payment plans available at registration

Registration deadline - TBD

Final Payment - January 11th, 2024

TRP+ Travel Refund Protections included - \$350

Visit: www.grandclassroom.com

Click > Find My Trip/Register

Search > Franklin Public Schools and MA

Select > Southwest Adventure 2024

Questions?

Contact: Nick Goldman (goldmann@franklinps.net)

Greg Rakovic (rakovicg@franklinps.net)

Gregg Wachtelhausen (GreggW@grandclassroom.com)





THANK YOU!!!

