

**Franklin Public Schools
Franklin, Massachusetts 02038**

Action Required

Subject:

Out of State Travel

Date:

September 25, 2018

Dept:

FHS

Reason:

Past practice of the Committee requires a vote to allow students/staff to travel outside of the State/Country

Enclosure

Yes

Background

Recommendation:

FHS Europe Trip Proposal

I recommend approval of the request of Mr. Walsh & Mr. McCarthy to take FHS students to Berlin, Prague, Krakow (Auschwitz) and Budapest from June 23, 2019 through July 3, 2019 as detailed.

Action Requested of the School Committee:

Majority vote of the Committee is required.

<u>Vote Tabulator</u>	
A. Bergen: Y / N	D. Schultz: Y / N
C. Douglas: Y / N	MJ Scofield: Y / N
D. Feeley: Y / N	G. Zub: Y / N
M. Linden: Y / N	Action: _____

To: Paul Peri
From: Mike Walsh and Kevin McCarthy
Re: Trip Proposal
Date: September 12, 2018

Please consider the following trip proposal:

- a. **Destination:** Berlin, Prague, Krakow (with day trip to Auschwitz), Budapest
- b. **Dates:** Depart June 23, return July 3, 2019
- c. **Itinerary:** see attached [tour proposal](#) from Education First (EF)
- d. **Trip Purpose/Educational Alignment:** The overall purpose of the trip is to support student growth. We believe that travel, and exposure to other cultures, is in and of itself invaluable. Furthermore, this trip includes curricular connections to several history courses, including World History (especially the Holocaust), US History II (especially the Cold War), and AP European History.
- e. **Trip expense:** approx. \$3,500 including all travel, room and board -- not including spending money
- f. **Equity issues for limited income students:** If the trip is approved, Mr. Walsh will look into fundraising options. Goal will be that some of the monies raised, perhaps 10-20% off the top, could go directly to assist families with documented financial limitations (i.e./ eligible for school lunch program)
- g. **Accessibility for students with disabilities:** From EF: "For any students with physical disabilities, it's best to discuss this amongst the student, their parents, and you as the teachers who will be there, to make the decision if the student will be able to get around easily enough. If there is a parent/nurse that must join them to make it possible, we can provide them a discount if need be. There is a lot of walking on our tours, but it's not to say it can't be done."
- h. **number of students needed to support the trip:** While the absolute minimum is around 12, we would not be inclined to run the trip if we had less than 25 or 30 students.
- i. **Number of chaperones in attendance:** Our goal is to have at least one chaperone for every 12 students.
- j. **Method of transportation/travel agency:** Education First (EF)
- k. **Insurance:** Trip insurance is included

l. **Emergency plan/medical care plan:** Chaperones are prepared to carry out basic medical care for students. EF includes contacts for emergency health situations for each stop on the trip.

m. **CORI:** We would limit chaperones to full-time staff at Franklin High School.

n. **Extended Field Trip Waiver:** For this, with your approval and that of Dr. Ahern, we hope that the School Committee will grant.



Educational Tours

FRANKLIN HIGH SCHOOL INTERNATIONAL TRAVEL TOUR PROPOSAL

Berlin, Prague, Krakow, and Budapest

Prepared for: Michael Walsh
Franklin High School
6/27/2019

Your partner in global education

As the **World Leader in International Education**, we've partnered with educators around the world for over 50 years to help students gain new perspectives and build skills for the future through experiential learning. We provide a range of travel programs—Educational Tours, Language Immersion Tours, Service Learning Tours, Global Student Leaders Summits and Custom-Designed Tours—that provide in-depth exploration, authentic connections and hands-on experience. Every EF global program is designed to:

- Explore international destinations to gain awareness of global perspectives and connections
 - Promote international understanding, respect for different cultures, language learning and global citizenship
 - Align with school curricula to bring subjects, people, places and events to life
 - Provide global settings to sharpen key 21st century skills—critical thinking, problem solving, communication, collaboration and global competence
 - Develop interpersonal and leadership skills necessary to navigate new experiences with confidence and adaptability
-

What we'll cover in this document

PAGE

1	Your partner in global education
2	Our commitment to education
3	Our commitment to safety
4	We'll handle the details
5	A day-by-day look at your tour
6	What your hotels will be like
7	What your meals will be like
8	Price details
9	Important final details

This proposal is property of EF Education First and the educator/school for which it was intended. Distributing, copying and/or sharing it are prohibited. The proposal, including pricing, is valid for the educator, tour and date(s) specifically mentioned herein. For additions, subtractions or modifications, please contact your EF Tour Consultant.

© 2016 EF Education First International Ltd. For full terms and conditions visit eftours.com/bc.

Our commitment to education

We believe the best way to help students gain new perspectives and build skills for the future is through experiential learning.

Accreditation

EF is accredited, just like your school, and recognized by the following regional, national and international organizations: Middle States Association of Colleges and Schools (MSA-CES); Western Association of Schools and Colleges (WASC); Southern Association of Colleges and Schools (SACS-CASI) North Central Association (NCA-CASI); National Council for Private Schools Accreditation (NCPSA); and Accreditation International (AI).

A standard of excellence

Our educational travel programs bring to life the knowledge and skills that are called for in many education initiatives, including:

- Partnership for 21st Century Skills (P21)
- International Baccalaureate – PYP, MYP, Diploma, IBCC
- Common Core State Standards for English Language Arts and Literacy in History/Social Studies, Science and Technical Subjects
- Global Competence Criteria—defined by the Asia Society and Council of Chief State School Officers
- Global Connection Standards in the National Curriculum Standards for Social Studies
- Culture and Connections Standards in the Standards for Foreign Language Learning
- Standards of Professional Learning—defined by Learning Forward

weShare, A More Engaging Learning Experience

You know students learn on a deeper level when what you're teaching connects to their own lives. That's why every tour comes with weShare, a personalized learning experience powered by your students' curiosity. Using EF's guided learning model, students use their strengths to investigate an issue or topic that inspires them. They reflect on what they've learned through a post-tour project that gives even more meaning to travel—and can earn them academic credit.

Earning credit

Students can earn credit by traveling on an EF tour and completing required coursework. We offer choices, so you can find the credit option that best fits you and your students' needs.

- Students in grades 7-12 can earn elective credit for completing assignments before, during and after their EF tour, setting themselves apart from other college applicants.
- Students can earn college credit through our partnerships with accredited universities.

Accredited by:



Our commitment to safety

Our demonstrated commitment to safety and risk management is proven with our preventative procedures and extensive measures taken to ensure each traveler's safety.

Worldwide presence

As the largest international student travel organization, we have 500 schools and offices in more than 50 countries worldwide. With 43,000 EF staff and teachers around the globe, we're accessible wherever and whenever you need us.

General Liability Policy

- All EF Group Leaders and schools are automatically insured under our \$50 million General Liability Policy, regardless of whether or not the tour is considered a school event.
- This policy safeguards Group Leaders and schools in case of claims from on-tour incidents, such as personal injury and provides a legal defense and covers all associated legal fees.
- EF's Commercial General Liability Insurance is provided by nationally recognized insurance companies with A.M. Best Ratings of A-.
- All customer payments are protected by a \$1 million customer protection plan.
- EF's General Liability Policy allows for schools and districts to receive a certificate of insurance that names you or your school as a certificate holder. To receive a certificate of insurance that details coverage, talk to your Tour Consultant.

Global Travel Protection Plan

Designed specifically with EF travelers in mind, all travelers have the option to purchase the Global Travel Protection Plan. This plan helps travelers protect their investment from common claims, including: flight delay, loss of job by a parent, death or illness of a family member, and medical coverage on tour in case of sickness or an emergency. While this plan is not required, many Group Leaders choose to make this comprehensive and affordable protection plan mandatory for their travelers.

EF's Peace of Mind Program

At EF, we understand that plans can change due to unforeseen circumstances. EF's exclusive Peace of Mind Program ensures:

- Teachers can work with EF Educational Tours to change their tour's travel dates, modify their tour plans, find an all-new tour or cancel their tour up until 45 days prior to departure. If unforeseen circumstances cause you to cancel within this time period, all travelers will receive a transferable travel voucher.
- With 44 days or less left until departure, teachers may still choose any of the above options if a formal Travel Warning is issued by the US Department of State for any country on your itinerary.

Highly respected in the industry by:



We'll handle the details

As your educational travel partner, we work with teachers, students and parents to ensure a seamless experience—before, during and after tour. In other words, we're with you every step of the way.

BEFORE TOUR

Support Team and resources

Dedicated Tour Consultants guide teachers through the planning process, while Local Representatives from your area work face-to-face to provide support. We give teachers their own personal tour website with helpful tools to share tour information, manage deadlines and more. In addition to online resources, we also provide an array of printed materials for teacher, students and parents.

International Training Tours

Ensuring teachers are fully prepared to lead an EF tour is our commitment to your school community. Through our blended learning model, all first-time EF Group Leaders receive complimentary international training. Conducted by EF personnel and experienced EF Group Leaders, the program includes online, classroom and experiential learning components. In the event a Group Leader cannot attend one of these complimentary tours, we offer live webinars to prepare them and answer questions before they travel.

Traveler account management

Our knowledgeable and friendly Customer Service Representatives help travelers and their parents with all billing transactions, protection plans and tour activity questions. We also offer flexible and convenient payment options that allow parents to choose when—and how—they want to pay.

WHILE ON TOUR

Everything is included

This all-inclusive global experience makes it easy for teachers and students to explore the world. From flights and hotels to most meals and experiential activities, we take care of every detail so travelers can focus on the experience.

Guided travel

A personal bilingual Tour Director stays with your group 24/7. They handle every on-tour detail to ensure a smooth travel experience while also providing unique local insight. Expert local guides, meanwhile, share their knowledge of history, art, architecture and more during guided tours.

AFTER TOUR

Program development

We'll work with you to build a travel program at your school so even more students have the opportunity to experience the world.

A day-by-day look at your tour

This is the itinerary page that students and parents will see in their tour itinerary guide. It's just one of the many resources they'll receive in preparation for your tour.

What you'll experience on your tour

Day 1: Fly overnight to Germany

Day 2: Berlin

- Meet your Tour Director at the airport in Berlin. Poised at the cutting edge of European culture, this German capital has been transformed since the Berlin Wall fell in 1989. During your stay you'll see Checkpoint Charlie, named after the checkpoint station that once guarded the border between East and West Germany. At the Topography of Terror Museum, on the site of the old SS and Gestapo headquarters, you'll touch the largest piece of the Berlin Wall still standing in its original spot.
- Take a walking tour of Berlin

Day 3: Berlin

- Take an expertly guided tour of Berlin: Brandenburg Gate
- Photo stop at Checkpoint Charlie
- Visit the Topography of Terror Museum
- Time to see more of Berlin or
- Visit Potsdam

Day 4: Dresden | Prague

- Travel to Dresden
- Take a tour of Dresden
- Continue on to Prague and encounter the legendary beauty of the former capital of the Holy Roman Empire. Located on the Vltava River, Prague gracefully balances the classical features of old Europe with a lively, Bohemian spirit. Walk the quaint, cobbled streets of the Mala Strana and visit the 13th-century Stare Mesto and Old Town Square. Here you'll see the famous 16th-century astronomical clock. From St. Vitus Cathedral to the Baroque statues of the Charles Bridge, you'll explore the celebrated art and architecture of the City of One Hundred Spires.
- Take a walking tour of Prague

Day 5: Prague

- Take an expertly guided tour of Prague: Charles Bridge
- Visit St. Vitus Cathedral
- Visit the Golden Lane

Day 6: Krakow

- Travel to Krakow, the only major Polish city to escape devastation during World War II, leaving the beautiful architecture of its Old Town intact. As you explore the former capital you'll see Wawel Cathedral, where Polish kings were crowned and Pope John Paul II once served as archbishop. Stroll through Główny Square, passing beautiful Sukiennice Cloth Hall and the Jagiellonian University. You'll also take a somber visit to the concentration camps at Auschwitz and Birkenau. Before you leave, observe a moment of remembrance for the six million victims of the Holocaust.
- Take an expertly guided tour of Krakow: Wawel Hill; Główny Square
- Visit Wawel Cathedral
- Visit St. Mary's Church

Day 7: Krakow

- Visit Auschwitz and Birkenau
- Enjoy free time in Krakow

Day 8: Budapest

- Travel via Slovakia and the Tatra Mountains to Budapest
- Take a walking tour of Budapest

Day 9: Budapest

- Take an expertly guided tour of Budapest
- Visit Matthias Church
- Visit Fisherman's Bastion
- Time to see more of Budapest or
- Visit the Budapest Baths

DAY 10: Depart for home

• 2-DAY TOUR EXTENSION

Day 10: Vienna

- Travel to Vienna, residence of the Imperial court for six centuries. Vienna is marked with the seal of the powerful Habsburgs, a family who once ruled over half of Europe.
- Enjoy an authentic wiener schnitzel dinner

Day 11: Vienna

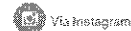
- Take an expertly guided tour of Vienna: Ringstrasse; Rathaus
- Visit Schönbrunn Palace

Day 12: Depart for home



*In Berlin, Germany #berlin
#germany #ef #gtours
#neverstopexploring*

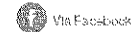
- NICK TRAVELER



Via Instagram

This trip was amazing!! Not many people get to go to Eastern Europe, and it was such a great experience. We loved our tour guide and I really felt like I bonded with my classmates. Would recommend this trip to everyone!

- MARK STUDENT



Via Facebook

TOP THREE THINGS I WILL SEE, DO, TRY, OR EXPLORE

1. _____
2. _____
3. _____

• Optional and excursions

What your hotels will be like

A good night's sleep is important, so you can count on safe, clean and comfortable hotels with private bathrooms. Every hotel we work with is required to meet our high standards for quality, safety and cleanliness. Three to four students of the same gender will share a room, which will have a combination of twin and shared double beds. Please be aware that hotels may have different amenities than you find in American hotels.

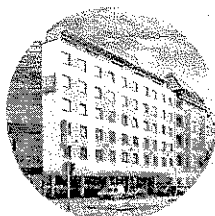
HERE ARE EXAMPLES OF THE TYPES OF HOTELS YOU'LL STAY AT ON TOUR:



Hotel Golf

Plzenská 103/215A
150 00 Praha 5
Czech Republic
www.brixenhotelprague.com

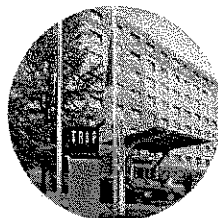
Situated in Western Prague, Hotel Golf is surrounded by scenic parks and is just a 20-minute ride from the city center by public transportation. Renovated in 2013, the hotel's 4-star accommodations make for a modern and comfortable place to stay. All rooms offer complementary high speed Wi-Fi and flat-screen TVs.



Ibis Berlin City West

Brandenburgische Straße 11
10713 Berlin Wilmersdorg
www.ibis.com/gb/hotel-3751-ibis-berlin-city-west

The Ibis Berlin City West is located in the up-and-coming Wilmersdorf district, just 0.9 miles (1.5 km) from the Kurfürstendamm. With the U-Bahn on your doorstep, it is quick and easy to travel to Berlin. The hotel has 136 air-conditioned, attractively designed, Wi-Fi equipped rooms. The beautiful sun terrace in the inner courtyard allows guests the opportunity to sit outdoors on sunny days.



TRYP by Wyndham Berlin City East

Ruschestraße 45, 10367
Berlin
Tel: 49 (030) 555070
Fax: 49 (030) 55507800

Located in the Lichtenberg district, the Tryp by Wyndham Berlin City East's easy access to public transportation allows visitors to make the most of their stay in Germany's capital city. The hotel features complementary Wi-Fi, a garden terrace, sauna and solarium. All of the hotel's 241 rooms are equipped with a private bathroom, desk, telephone and satellite TV.

What your meals will be like

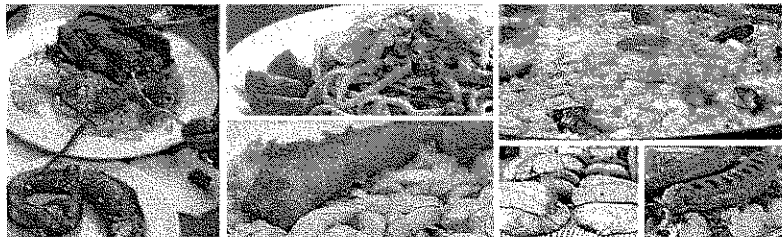
These are examples of the types of meals you and your students will be served on tour.



Educational Tours

Sample Menus: Europe

Discovering new foods can be one of the best parts of traveling. The sample menus below are just a few examples of the types of traditional, local favorites you will have the opportunity to try on tour. Every meal will include table water (or bottled water if deemed necessary by locals) and you can usually buy other beverages if you wish. All meals are served as a group—not à la carte—and a vegetarian option will be available if requested in advance. Please notify EF of any other dietary restrictions or food allergies you may have. Enjoy!



AUSTRIA

Soup
Wiener schnitzel
Chocolate cake

CZECH REPUBLIC

Soup
Goulashi
Ice cream

FRANCE

Menu 1
Cheese quiche
Turkey with rice, sauce,
mushroom and beans
Apple tart

Menu 2

Salad
Hammekueche
Chocolate mousse

Menu 3

Couscous with
vegetables and meat
Fruit salad

GERMANY

Menu 1

Pretzel with
cream cheese
Turkey with
spatzle dumplings
Fruit

Menu 2

Vegetable soup
Bratwurst with kraut
and mashed potatoes
Ice cream

GREECE

Menu 1

Spinach pie
Moussaka
Rice pudding

Menu 2

Greek salad
Chicken with oven-
baked pasta
Walnut pie

ITALY

Menu 1

Tomato bruschetta
Cannellini beans with
garlic and sage
Lasagna
Gelato

Menu 2

Spaghetti with pesto
Pork loin with spinach
and potatoes
Fruit salad

IRELAND

Soup

Chicken with mashed
potatoes and gravy
Fruit salad

SPAIN

Spanish Tortilla
Pork loin with potatoes
and mushrooms
Ice cream

SWITZERLAND

Soup

Alpine Macaroni
Chocolate mousse

UNITED KINGDOM

Menu 1

Fish and chips
Ice cream

Menu 2

Chicken and hummus
Flan

Menu 3

Naan bread
Chicken curry

ICELAND

Meatballs, potatoes & brown sauce
Fish balls with potatoes and butter
Fried vegetables

PLEASE NOTE: MEALS VARY BY TOUR. THE MENU ITEMS LISTED AND PICTURED ABOVE ARE EXAMPLES.

EFTOURS.COM | 800-837-8222

Price details

In addition to the support you receive before and after tour, along with the logistical support you receive on tour, your guaranteed lowest price covers all of the details.

TOUR PRICE QUOTE

Berlin, Prague, Krakow, and Budapest

PREPARED FOR
Michael Walsh

PREPARED ON
April 25, 2018

YOUR TOUR NUMBER
2138177WA

YOUR TOUR WEBSITE
www.efours.com/2138177WA

GUARANTEED LOWEST PRICE

Price valid for travelers enrolled April 25, 2018 - April 30, 2018*

Student

\$3,340 or \$250 / 13 mos

Adult

\$3,840 or \$289 / 13 mos

PRICE BREAKDOWN

Program Price	\$3,140
Weekend Supplement	\$35
Global Travel Protection	\$165

*Adult supplement required for travelers age 20 and older at the time of travel. Change and cancellation fees of up to the total price will apply. Applicable airline baggage fees are not included and can be found at efours.com/baggage. All prices subject to verification by an EF Tour Consultant. Program price validity excludes special discounts. To view EF's Booking Conditions, visit efours.com/bc.

Your travel details

TOTAL LENGTH
10 days

DEPARTING FROM
Boston (MA)

REQUESTED TRAVEL DATES
Thursday, June 27, 2018 - Saturday, July 6, 2018

YOUR DEPARTURE DATE RANGE

☐ EARLIEST
Sun, Jun, 28

☒ REQUESTED
Thu, Jun, 27

☐ LATEST
Mon, Jul, 1



Your experience includes

AN ALL-INCLUSIVE TOUR

Round trip airfare, hotels with private baths, regional-style meals, on-tour transportation and sightseeing activities are covered. Discover all of your itinerary details at www.efours.com/2138177WA.

FULL-TIME TOUR DIRECTOR

Your culturally connected Tour Director is with your group 24/7, providing deep local insight while handling all on-tour logistics.

EXPERT LOCAL GUIDES

Your expert local guides are natural historians, adding cultural insight and global perspective on your sightseeing tours.

WESHARE—PERSONALIZED LEARNING

Our personalized learning experience engages students before, during and after tour, with the option to create a final, reflective project for academic credit.

CONTINUOUS SUPPORT

Your dedicated EF team helps you every step of the way—from recruiting and enrolling travelers to planning and managing your tour.

WORLDWIDE PRESENCE

EF has over 600 schools and offices in more than 50 countries worldwide so wherever you go, we're there too.

24-HOUR EMERGENCY SERVICE

Travelers and their families can count on EF's dedicated emergency service team.

PEACE OF MIND PROGRAM

Feel secure knowing your group can change their destination or travel dates due to unforeseen circumstances. Learn more about your flexible options at efours.com/peaceofmind.

Your Tour Consultant



ALEXA SCOTT
401-389-8141
Alexa.Scott@ef.com

Important final details

The EF Price Guarantee

We're dedicated to making travel accessible to as many students as possible. Our unmatched global presence and longstanding relationship with airlines and hotels ensure you will always give your students the best experience at the lowest price, guaranteed.

What it means for you:

- The guaranteed lowest price—if you find a similar tour for less, we'll beat it.
- One simple price—no enrollment or departure fees.
- Once a student enrolls, their price will never change.

International Training Tours

Through our blended learning model, all first-time EF Group Leaders experience a tour by traveling to Paris, Rome, Madrid, Berlin or Beijing, enhanced with online and classroom components. In the event a Group Leader cannot attend one of these complimentary tours, we offer live webinars to prepare them and answer questions before they travel.



Sincerely,
Alexa Scott
Educational Tour Consultant
401-369-8141
alexa.scott@ef.com