



Franklin Public Schools

*Office of the Superintendent
355 East Central Street; Suite 3
Franklin, Massachusetts 02038
Phone: 508-553-4819*

To: Franklin School Committee

From: Sara E. Ahern, Ed.D., Superintendent

Date: December 6, 2017

RE: Concession Stand at Pisini Field

Since the last School Committee meeting, I have met with Mr. Mike Socci, who presented a proposal for community fundraising and construction of a new concession stand and bathroom facility at Franklin High School's Pisini Field. If approved, the group would begin the fundraising process immediately. Additionally, we agreed to meet again mid-February to examine fundraising efforts to date and determine preparedness to begin the construction project. Should fundraising and volunteer efforts seem on track, construction would begin late winter with a project completion goal of the start of the fall sports season.

I am asking for the School Committee to vote to support the project pending the Superintendent's verification of sufficient funding.

**Franklin Public Schools
Franklin, Massachusetts 02038**

Action Required

Subject: Concession Stand

Date: December 12, 2017

Dept: School Committee

Reason: Required Vote

Enclosure: yes

Recommendation:

I recommend approval of the Concession Stand Proposal as discussed.

Action Requested of the School Committee:

Majority vote of the School Committee is required.

<u>Vote Tabulator</u>	
A. Bergen: Y / N	D. Schultz: Y / N
C. Douglas: Y / N	MJ Scofield: Y / N
D. Feeley: Y / N	G. Zub: Y / N
M. Linden: Y / N	Action: _____

Proposal

New Bathroom Facility and Concession Stand

Franklin High School

Pisini Field



EXISTING

PROPOSED



November 21, 2017

Our Town is fortunate to have a state of the art athletic track and field (Pisini Field) to complement our new Franklin High School. Most afternoons, evenings weekends throughout the year the facility is utilized by either FHS or Town sports teams. These youth programs include girl's youth lacrosse, youth soccer, Franklin Chargers football, as well as many high school programs such as football, soccer, girl's lacrosse, and spring track. Currently there are no bathroom or sanitary facilities for this athletic facility that sees more use than any other athletic facility in our Town. Throughout the year, a number of portable toilets are situated adjacent to the new Franklin High School to provide bathroom facilities for the families and children participating in the sports at Pisini Field. With the high frequency of events at this facility, maintaining the cleanliness of these temporary bathroom facilities is virtually impossible and often creates unsanitary and embarrassing conditions. During large High School events such as football games, the Horace Mann School is opened and the bathrooms closest to the field can be used by the spectators at the game, however, this provides a minimal number of facilities and is still supplemented by the temporary bathroom facilities adjacent to the new High School.

This proposal, as noted in the attached drawings and cover page, will provide a bathroom facility as well as areas for storage and concessions. The number of actual toilets proposed far outnumbers the amount that has typically been made available (combined temporary and Horace Mann bathrooms) during the largest events at the field, and would also provide a small sanitary area to be used as a concession stand. This new facility would eliminate the need for the current temporary concession trailer, which is in severe dis-repair, poor sanitary condition and an eye sore to the entire facility. Additionally, this

new bathroom facility would be handicap accessible for both the concession area and sanitary facilities, which is not the case for the existing facility or temporary bathrooms.

We are planning on utilizing mainly volunteers and donations to construct the facility, however, we would need support from the Town relative to land use approval, permits, utility service connections and access to the site. We have considered and look forward to discussing with you, the need to address safety and security at the facility during construction, insurance requirements, as well CORI issues due to the proximity to the schools.

Included in this package, please find a locus map showing the location of the proposed facility, an actual rendering of the proposed facility on the cover page of this proposal, as well Architectural Drawings of the facility complying with applicable codes required for a facility of this type.

We appreciate your time and efforts in reviewing this proposal and look forward to discussing it with you, in hope of obtaining your support.

Locus Map



RESCOM

Architectural, Inc.

P.O. BOX 157 MONUMENT BEACH, MA 02553
118 WATERHOUSE ROAD, BOURNE, MA 02532

Residential & Commercial
Architecture

Phone (508) 759-9828
Fax (508) 759-9802

CONTACT PERSON GREGORY SIROONIAN

PROJECT

FHS Concession Stand

COPYRIGHT
THE USER ACKNOWLEDGES THAT THE ARCHITECT'S DOCUMENTS ARE INSTRUMENTS OF PROFESSIONAL SERVICE AND ARE BY COMMON COPYRIGHT. THIS DOCUMENT IS THE PROPERTY OF THE ARCHITECT AND SHALL NOT BE MODIFIED, AMENDED, OR ALTERED IN ANY WAY. IT IS ISSUED FOR INFORMATION PURPOSES ONLY. THE USER AGREES TO HOLD HARMLESS, INDEMNIFY AND DEFEND THE ARCHITECT AGAINST ANY AND ALL DAMAGES, CLAIMS, AND LOSSES, INCLUDING DEFENSE COSTS, ARISING OUT OF ANY USE, REUSE OR COPYING OF THIS DOCUMENT.

DRAWING TITLE

FLOOR PLAN

REVISIONS

NO	DATE	DESCRIPTION

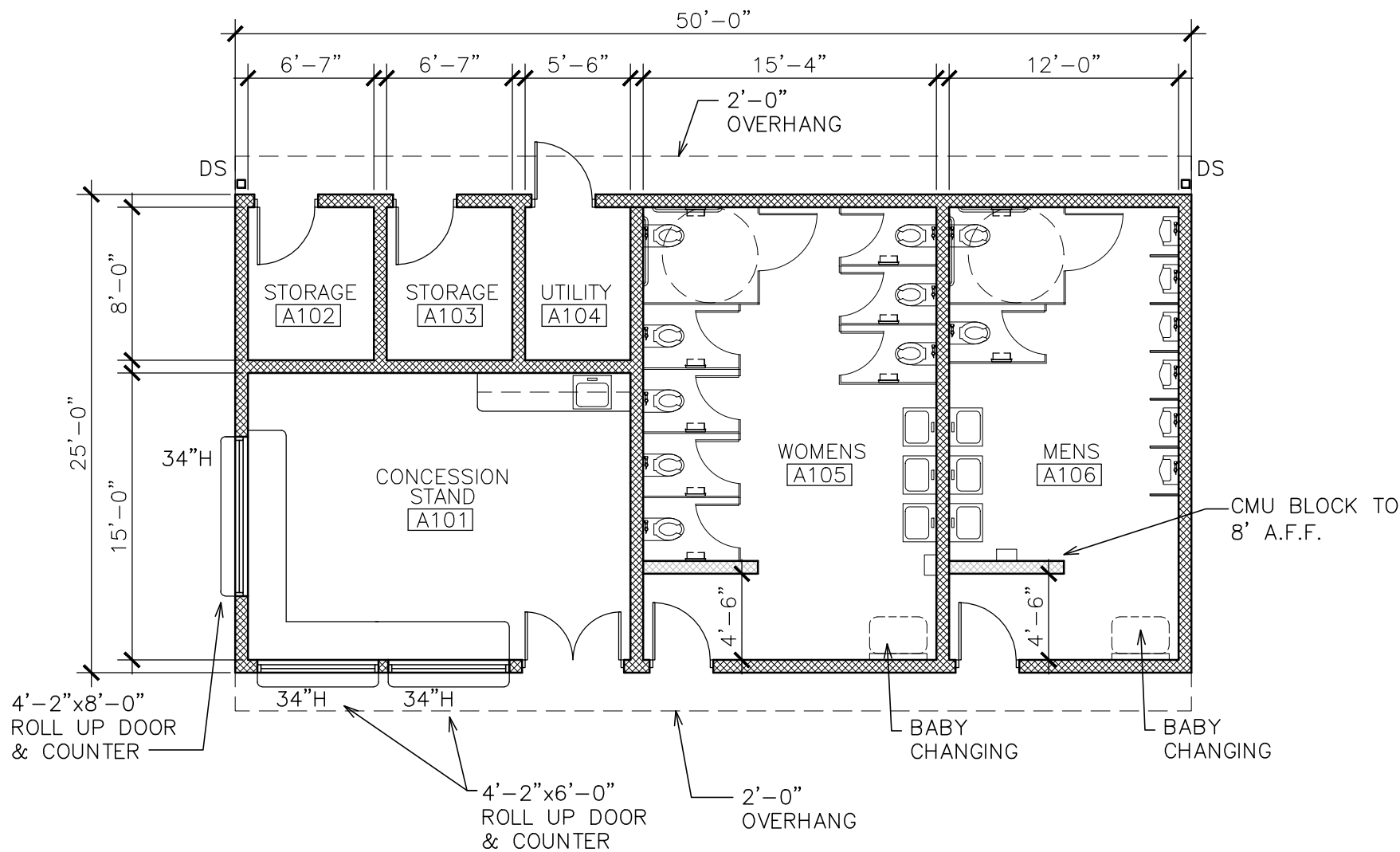
PROJECT NO.

DATE OF ISSUE 06/16/17

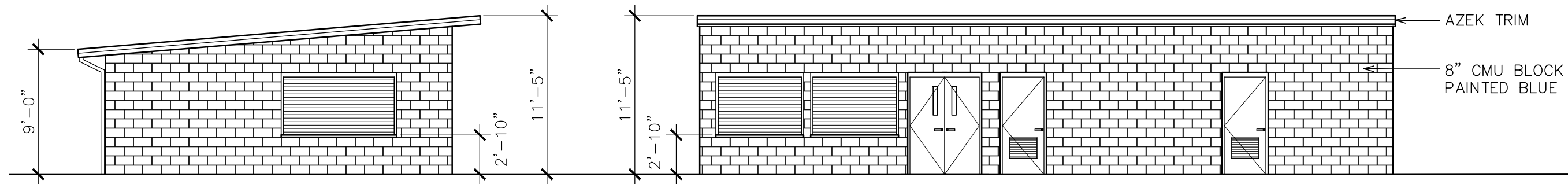
DRAWN BY: MRH CHECKED BY: GBS

DRAWING NUMBER

A-1

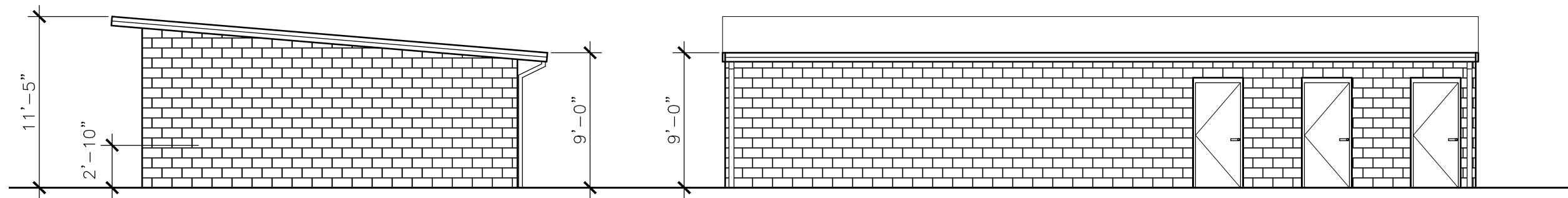


1 FLOOR PLAN
A-1 SCALE: 1/8" = 1'-0"



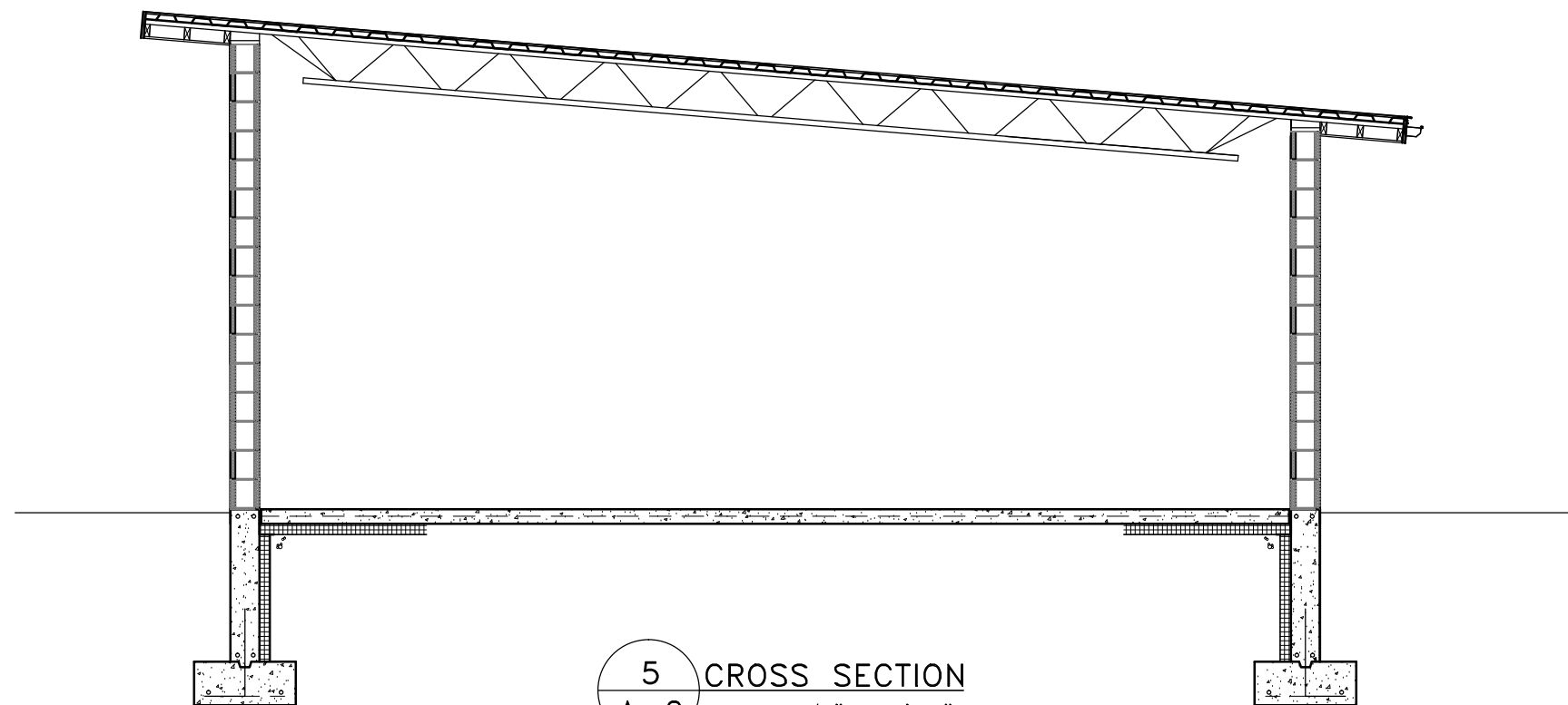
2 LEFT ELEVATION
A-2 SCALE: 1/8" = 1'-0"

1 FRONT ELEVATION
A-2 SCALE: 1/8" = 1'-0"



3 RIGHT ELEVATION
A-2 SCALE: 1/8" = 1'-0"

4 REAR ELEVATION
A-2 SCALE: 1/8" = 1'-0"



5 CROSS SECTION
A-2 SCALE: 1/4" = 1'-0"

RESCOM

Architectural, Inc.

P.O. BOX 157 MONUMENT BEACH, MA 02553
118 WATERHOUSE ROAD, BOURNE, MA 02532

Residential & Commercial
Architecture

Phone (508) 759-9828
Fax (508) 759-9802

CONTACT PERSON GREGORY SIROONIAN

PROJECT

FHS Concession Stand

COPYRIGHT

THE USER ACKNOWLEDGES THAT THE ARCHITECT'S DOCUMENTS ARE INSTRUMENTS OF PROFESSIONAL SERVICE AND ARE BY COMMON COPYRIGHT. THIS DOCUMENT IS THE PROPERTY OF THE ARCHITECT AND SHALL NOT BE MODIFIED, AMENDED, OR ALTERED IN ANY WAY. IT IS ISSUED FOR INFORMATION PURPOSES ONLY. THE USER AGREES TO HOLD HARMLESS, INDEMNIFY AND DEFEND THE ARCHITECT AGAINST ANY AND ALL DAMAGES, CLAIMS, AND LOSSES, INCLUDING DEFENSE COSTS, ARISING OUT OF ANY USE, REUSE OR COPYING OF THIS DOCUMENT.

DRAWING TITLE

ELEVATIONS &
CROSS SECTION

REVISIONS

NO	DATE	DESCRIPTION

PROJECT NO.

DATE OF ISSUE 06/16/17

DRAWN BY: MRH CHECKED BY: GBS

DRAWING NUMBER

A-2

Franklin Gridiron Club
P.O. Box 262
Franklin MA 02038



Dear Franklin Town Administration, School Committee, and Superintendent of Schools,

The Franklin Gridiron would like to inform you of our support of building a new facility at Pisini Field Franklin High School to provide new bathrooms, concession stand, and some storage for the athletic teams. This would make for a much cleaner, convenient, and overall better environment to go along with our world class new athletic field and High School. This would benefit not just the Franklin fans that come to support all of Franklin sports team that use Pisini field but our visiting fans as well.

Our hope is with your approval the process can move forward so we can have this in place for the 2018 Fall athletic season.

Respectfully,

Dan Hofferty
Matt Gordon
Co-Presidents Franklin Gridiron Club