

An aerial photograph of a tropical coastline. On the left, a sandy beach is lined with numerous green palm trees. In the upper left, there are buildings with green roofs. The water is a vibrant turquoise color, showing some depth variations. A white speedboat is moving from the top right towards the bottom right, leaving a white wake. A large, semi-transparent white circle is centered over the image, containing text and a small airplane icon.

Let's go to...

Belize



Belize City, Cayo region, Punta Gorda, Southern coast, Tobacco Caye – 8 Days

Our agenda

What we are going to cover



1. Introduction
2. Our itinerary
3. Student Prereq's
4. Why Travel with EF Tours
5. Price
6. Equity & Accessibility



My name is Mary Balliro

- Science Teacher
- 1st EF tour
- 2nd trip to Belize

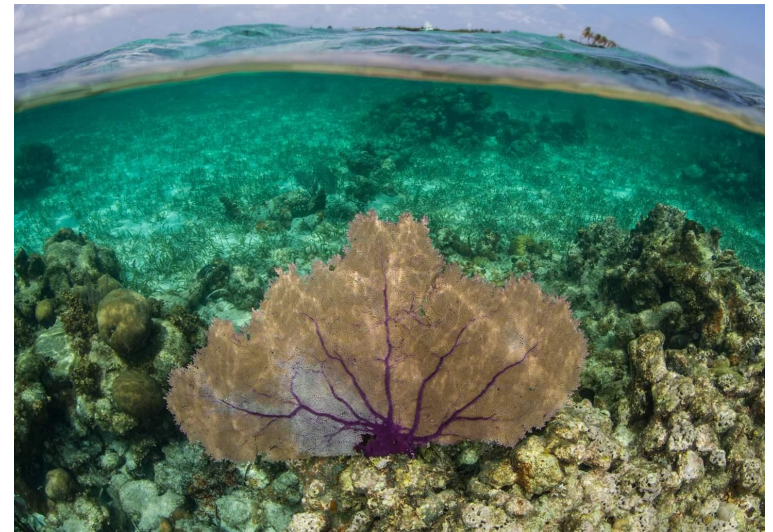




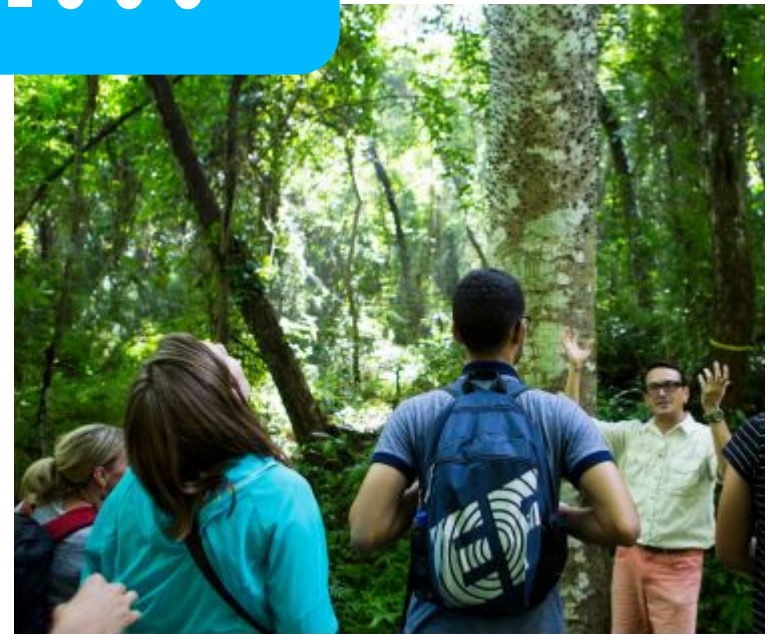
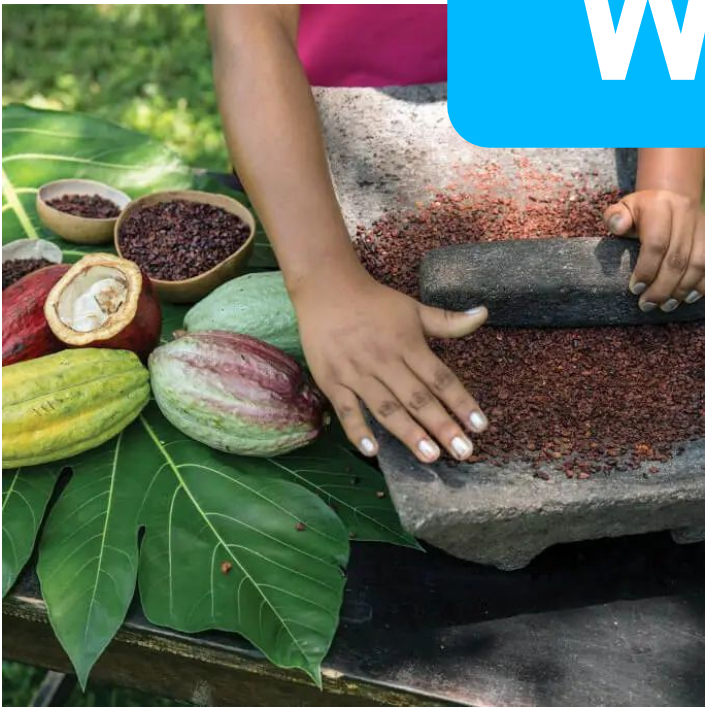
My name is Catherine Quigley

- Science Teacher
- 1st EF tour
- 2nd trip to Belize



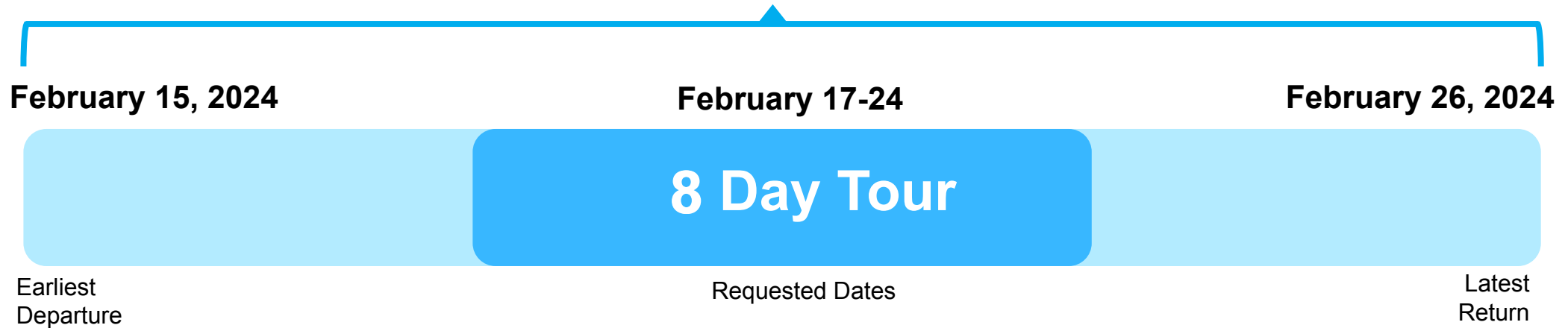


Why we travel...



Our Travel Dates

****Block off your calendars from the earliest departure to the latest return****



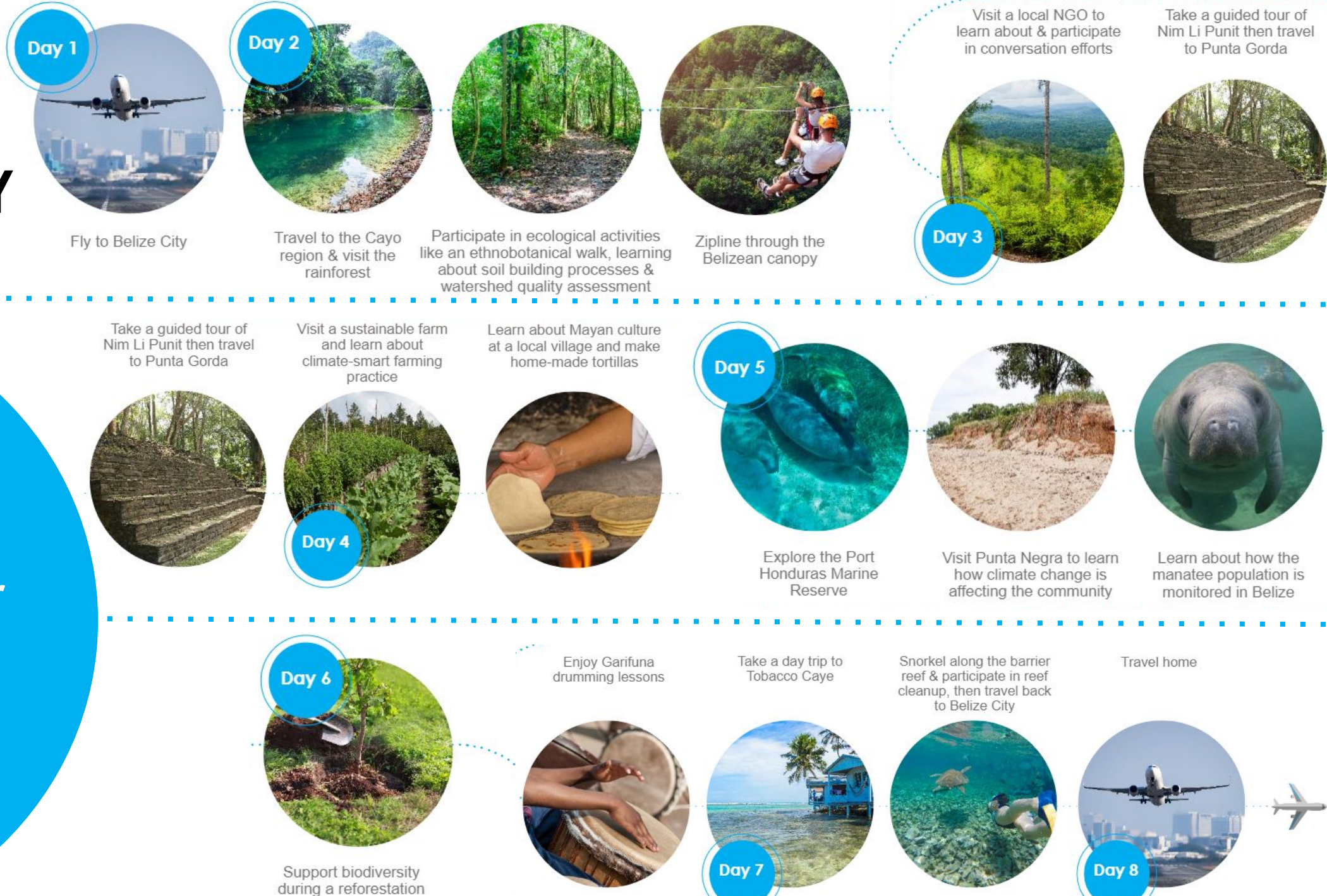
- ✈️ Our flexibility with these dates will help EF create the best on-the-ground experience for us
- ✈️ We will receive our final date range 2-3 months before tour
- ✈️ Our group could be combined with another school, requesting similar dates and destinations, which will be a great opportunity to meet students from another part of the country

Belize: Conservation From Ridge to Reef



EXAMPLE ITINERARY

Activities and excursions for our tour may differ.



Explore the ecology
of one of Belize's rainforests



Keep an eye out for manatees at the Port Honduras Marine Reserve



Discover how agricultural practices are linked to reef health in Punta Gorda



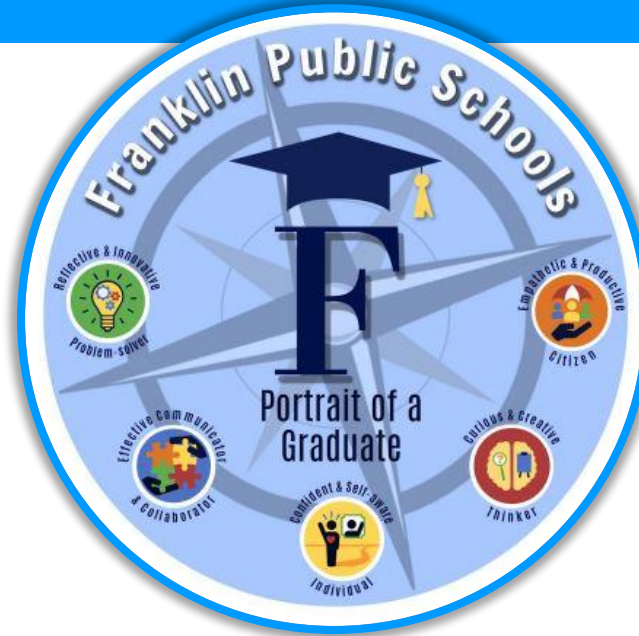
FHS Prerequisites



Course Requirements

Have taken or enrolled in any of the following courses during '23-'24 school year.

- Environmental Science (OH / AP)
- Behavioral Science
- Comparative Anatomy
- AP Biology



Behavioral Requirements

In addition to teacher discretion, students must be in good behavioral standing at the time of sign-up until the departure date. Behavioral expectations will be shared with students, teachers and families.



Opening Up Spots...

Students who anticipate taking a prerequisite course during the '24-'25 school year will be eligible.

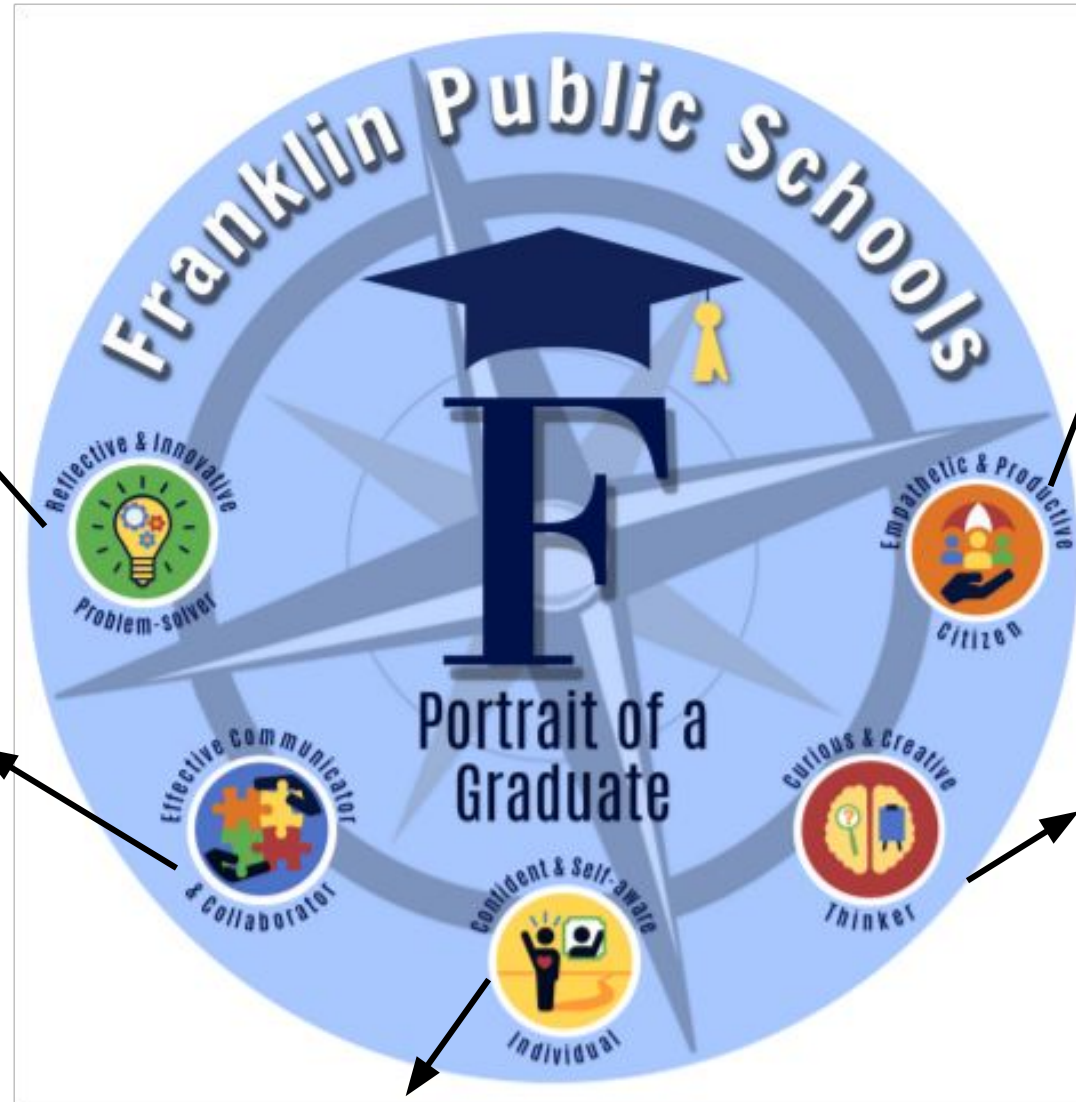
These students will be asked to express their passion and interest for taking the courses prior to being enrolled in the trip.

**Reflective & Innovative
Problem-solver**

Reflective about our culture, country, food, etc. Travel will implore students to compare/reflect what they know to what they are seeing.

**Effective Communicator &
Collaborator**

Students must challenge themselves by working local guides and rangers to participate in conservation related adventures



Empathetic & Productive Citizen

Gives students a different perspective on cultures other than their own.

Curious & Creative Thinker

Builds curiosity in many areas such as: education, food, transportation, science and the natural world etc.

Confident & Self-aware Individual

Confidence is gained by travelling away from family, and self awareness is built for the same reason, as well as making sure they understand those around them.

EF Educational Tours

Our educational travel and safety partner

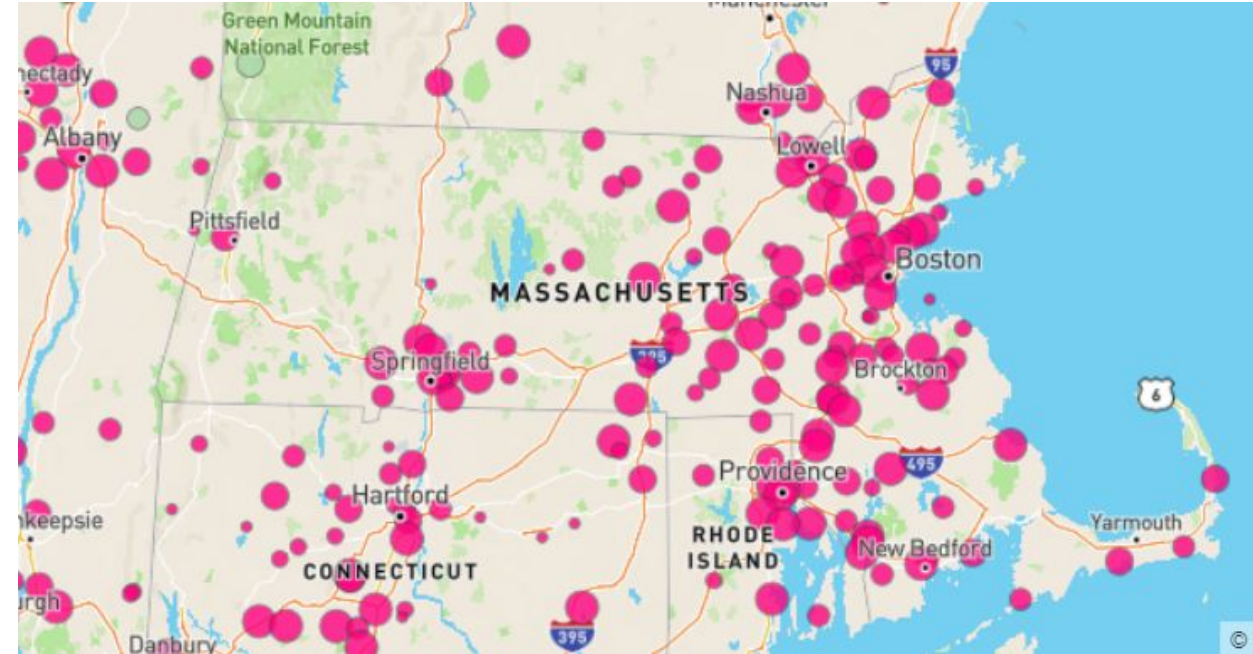


- Over 55 years of experience
- Staff on the ground 365 days a year in over 50 countries including an office in San Jose, Costa Rica
- World leader in international education
- Accredited, just like our school

Why partner with EF...



Many other
communities in
MA and
throughout New
England travel
with EF, too!



Our EF STEM experience



Experiential learning

We will apply STEM principles by participating in project-based learning that goes well beyond theory



Innovative locations

We will tour exciting destinations that host some of the world's most advanced laboratories, universities, and companies, or are simply perfect global "classrooms" to study scientific issues of the day in real life



Industry experts

We will collaborate and learn with scientists, engineers, researchers, and other STEM practitioners in the field

What's included in our itinerary



Round-trip airfare on major airline carriers



Hotel stays at quality, clean accommodations



Regional-style meals for breakfast, lunch, and dinner



Tour Director who will be with us 24/7



Transportation on tour, including a comfortable motorcoach bus



Expert local guides providing cultural insight



Guided sightseeing of all our destination has to offer



Hands-on STEM learning with industry-leading experts & organizations

What you are responsible for

- 🌐 Passport and visa fees
- 🧳 Airport baggage fees
- 🍴 Lunches and snacks
- 🎁 Spending money
- 💵 Tips



Our safety partner



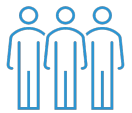
Local support and insight worldwide



EF's Safety and Incident Response Team



Rigorous health standards

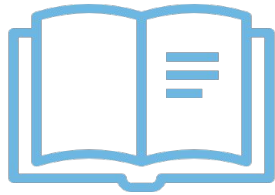


24/7 Tour Director and chaperone team support



Our education partner

The best way to help students gain new perspectives and build skills for the future is through experiential learning



EF's Personalized Learning Guide

This guide helps students put a more personal lens on their tour by tapping into their own interests and passions.



High school or college credit

Students can earn 0.5 high school credits (included) or 3 college credits (for a small fee) by doing additional project work related to their tour experience.



College essay help

EF's college essay guide helps students use their tour as inspiration for a personal essay that admissions officers can't resist.

Come home changed

EF's learning outcomes continue to impact students for the rest of their lives



Growth Mindset

Students will learn to embrace new challenges



Global Perspective

Students will expand their world view



Personal Development

Students will discover more about themselves



Action & Impact

Students will gain necessary skills to make an impact

Learn more at eftours.com/education

Our support partner



Tour Consultant

My consultant helps me, your Group Leader, every step of the way from planning our tour all the way until we depart



Traveler Support Team

This team works with all of you, parents and students, to answer any possible questions from payments to dietary needs and more, including all the what-ifs and how-tos



Tour Director

Our Tour Director is our 24/7, bilingual guide who will be leading our tour, handling all of the logistics, and exposing us to local history and culture



Group Leader

That's me! I'll be here to support all of you as well, along with my chaperone team

Book with confidence

For our group:

Peace of Mind Program

This program provides our group with flexibility to change our trip during uncertain times and for unforeseen circumstances.

****We will provide more information about all these benefits after this info session.***

For each traveler:

Global Travel Protection (included)

Included for all travelers, this plan provides coverage for baggage and property, trip cancellation and interruption, and more.

Global Travel Protection Plus (+\$300)

Available to all travelers upon enrollment, this plan allows for cancellation for any reason up to 24 hours prior to departure.

Risk-free enrollment period

Travelers who enroll by 3/15/23 will receive \$100 off can cancel for any reason up to 14 days after enrollment for a full refund of 100% of the money paid to EF

Everything we get



Itinerary & logistics

- ✓ Everything we talked about getting on tour!



Payments & protection

- ✓ Flexible payment options
- ✓ Personal Tour Fundraising Page
- ✓ Global Travel Protection Plan included



Safety & support

- ✓ Personal traveler account online
- ✓ Traveler Support Team
- ✓ 24/7 Safety & Incident Response Team
- ✓ Peace of Mind Program



Personalized learning

- ✓ Project-based learning guide
- ✓ High school and college credit options available
- ✓ College essay help



Making it happen

Flexible payment options

**\$100 discount &
Risk-free enrollment**
If you enroll by March 15th 2023

\$183

BI-WEEKLY

(includes \$95 deposit)

\$381

**monthly for
12 months**

(includes \$95 deposit)

\$4,579

IN FULL

\$5,069
for adults

\$4,479

WITH DISCOUNT

\$4,969
for adults

**Manual payment options available: pay in larger, less frequent installments for a small fee
(Manual payment options are not valid for the risk-free enrollment period)*

Making it happen



Global Citizen Scholarship

This scholarship is designed to help students discover the world—and their place in it.

- EF awards up to \$100,000 in scholarships each year
- Needs- and merit-based
- Any enrolled traveler may apply



Customizable Tour Fundraising Page

Every traveler who enrolls will receive an individual tour fundraising page.

- Anyone can contribute! Send your fundraising page to friends, family, and loved ones
- 100% of all contributions made will go directly toward your tour balance

Equity & Accessibility

Wilderness is not a luxury but a necessity of the human spirit, and as vital to our lives as water and good bread.

— Edward Abbey



Accommodations/arrangements

- Case by case basis to best support students needs

Student Aid

- Students with physical impairments or limitations can be accompanied by a travel aid (of their choosing)
 - Approved Travel Aid receives a 40% discount

Examples of Previous EF Accommodations for Students

- Modified hikes
- Lifejackets during tubing & snorkeling
- Extra time scheduled in other areas
- Translators/Interpreters next to tour guides for students who are hearing impaired

